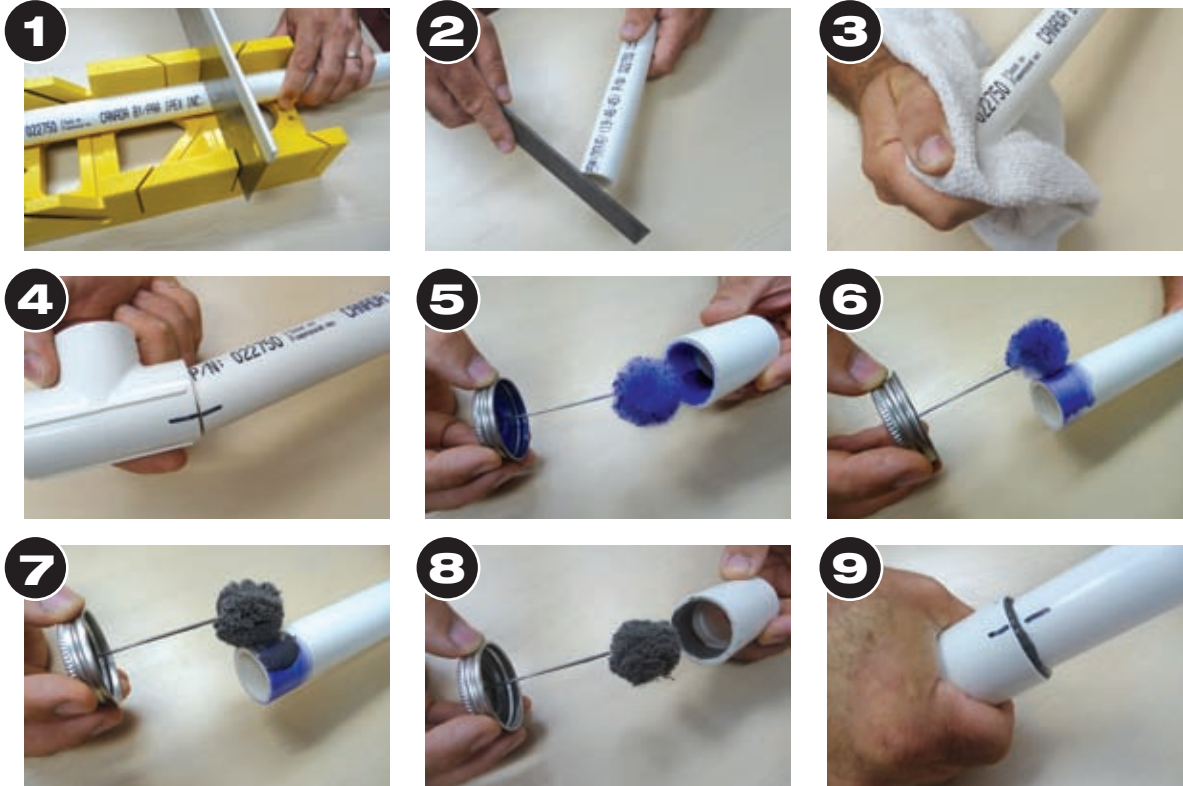


How to Join PVC Schedule 40 Pipe and Fittings

Solvent Weld Connections



- 1** Cut pipe square (miter box and saw, pipe cutter, handsaw etc.).
- 2** Deburr pipe and bevel outside edge (file, knife etc.).
- 3** Clean pipe and fitting with a clean rag.
- 4** Test fit and mark orientation of fitting on pipe.
- 5** Work PVC primer into fitting socket.
- 6** Work primer onto end of pipe ½” beyond depth of fitting socket and **apply second layer of primer to fitting socket.**
- 7** Apply a full even layer of PVC cement onto the pipe end (do not brush out into a thin layer).
- 8** Apply a layer of cement into the fitting socket and **apply a second full even layer of cement to the pipe end.**
- 9** Immediately assemble socket onto pipe with ¼ turn, ensuring proper alignment. Hold assembly together for 30 seconds to prevent pushout and wipe excess cement from the joint.

Threaded Connections



- 1** Wrap **clockwise** 2-3 turns of white PTFE thread sealing tape onto male threads following tape manufacturers instructions.
- 2** Assemble fitting finger tight then tighten with a wrench. **DO NOT TO OVERTIGHTEN AND DAMAGE THE FITTING**