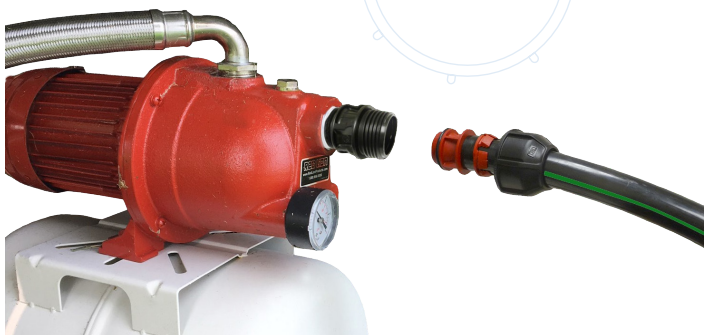
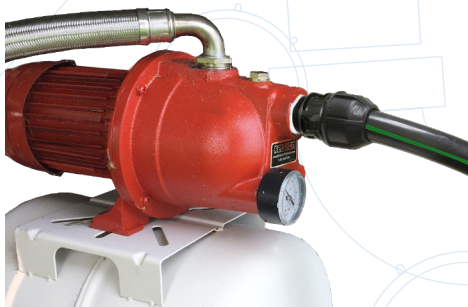


Philmac®

UNION FITTINGS FOR POLYETHYLENE PIPE

**Ideal for cottage, rural and
farm water systems where a
disconnect is needed**

- MPT/FPT fittings provide a convenient pump disconnect for service or seasonal storage.
- Couplings easily connect/disconnect temporary and seasonal water lines.
- Philmac connects to all series of poly pipe (75 through 100PSI, CSA and Standard).
- No metal clamps to rust or break.
- Tough thermoplastic fittings will not rust or corrode and rated to 230psi.
- Approved for potable cold water.



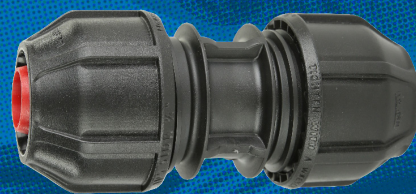
PLUMBING & IRRIGATION



Male (MPT) Adapter



Female (FPT) Adapter



Coupling



90° Elbow (FPT)



B137.1
NSF/ANSI 61

**IPEX
HOMERITE®**
products

1425 North Service Road East, Unit 3
Oakville, Ontario L6H 1A7
Toll Free: 800-463-9572

ipexhomerite.com
info@ipexhomerite.com



UNION FITTINGS FOR POLYETHYLENE PIPE

IPEX Code	Product Description	Where Used
358060	3/4" Coupling	Seasonal disconnect of lake water intake.
358061	1" Coupling	
358062	1-1/4" Coupling	
358069	3/4" MPT Adapter	Disconnect poly from pump.
358072	1" MPT Adapter	
358075	1-1/4" MPT Adapter	
358082	3/4" FPT Adapter	Connects to threaded nipple, pipe or MPT fitting.
358084	1" FPT Adapter	
358086	1-1/4" FPT Adapter	
358100	1" PE x 1" FPT Elbow	90° connection to threaded nipple, pipe or MPT fitting.

Making a connection is easy:

Begin by cutting pipe squarely:

1. Slide nut, then collet onto the pipe making sure the collet is oriented correctly
2. Tap insert into pipe with mallet or block of wood until fully seated
3. Slide collet and nut onto fitting and hand tighten
4. Finish tightening with a wrench

User Hint: For MPT Adapters, attach fitting to pump etc. before attaching poly pipe.

Apply 3-4 wraps of pipe sealing tape to threads before attaching to the pump.



1.



2.



3.



4.